

Unsure about using Sibme AI? You may be thinking...



Who can see my videos, artifacts and chats?

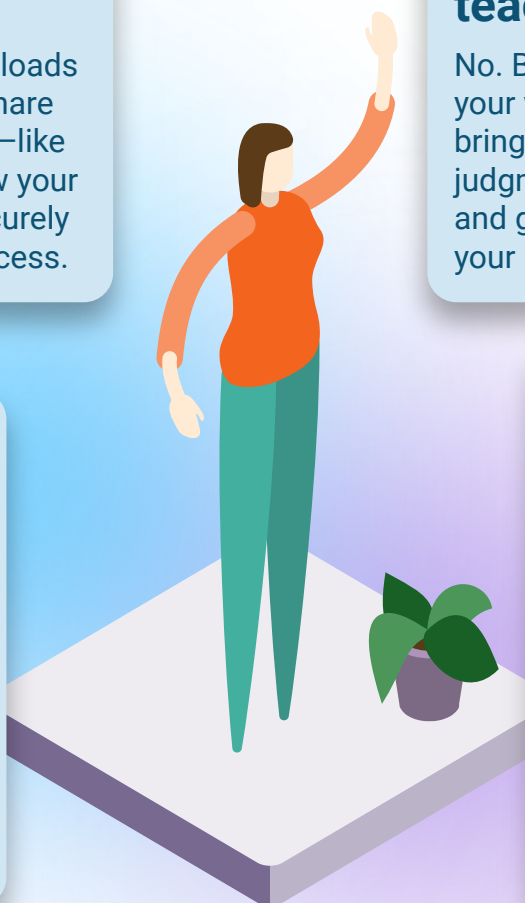
You're always in control. Your uploads are private until you choose to share them. Only the people you invite—like coaches or colleagues—can view your content. Everything is stored securely so you always know who has access.

Can this replace me as a teacher?

No. Both Sibme and Sibme AI support your work but never replace you. You bring the expertise, relationships, and judgment. Our tools simply save time and give you insights to strengthen your practice.

How can this help me as a teacher?

You can record lessons to review key moments, and get quick insights, upload student work for quick analysis of learning trends, and even design or refine lesson plans and materials using Sibme AI as a thought partner and guide.



Is it safe to use with my student's info?

Yes. Sibme follows strict privacy laws and uses secure, encrypted storage. Only people you authorize can see your videos. Features like face-blur add extra protection so you can use the platform with confidence.

Who will be able to help me in implementing this?

Your school or district team will guide setup, and Sibme's support staff is here to help anytime. Coaches and colleagues can also work with you as you get started. You're supported at every step.

For further information on these topics go to Sibme's Legal or AI Concerns pages.

AI Concerns



AI FAQs



Compliance



Privacy

